

Men's Styles and Fit

Our men's shirts are available in Fitted, Slim, Classic, Regular and Relaxed styles. Look out for the corresponding shirt fit symbols throughout the Style Guide to make selecting your corporate range easier. Use the guide below to choose the best shirt and pant style for your body type and comfort needs.



F

FITTED

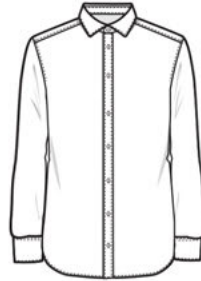
- Slim tailored fit
- Suitable for a slimmer figure
- Tapered through the shoulders, chest and waist



S

SLIM

- Shaped close to the body
- Tapered from the chest to waist
- Slim silhouette



C

CLASSIC

- Classic tailored fit
- Suitable for most body types
- Slight tapering through the body



R

REGULAR

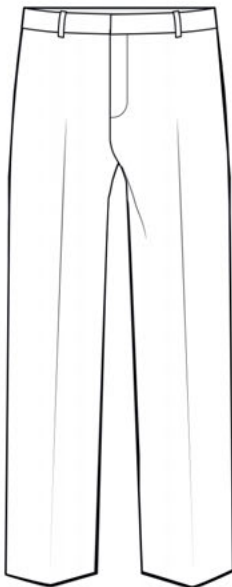
- Gently tapered from the chest to waist
- Medium flattering fit
- Suitable for most body types



X

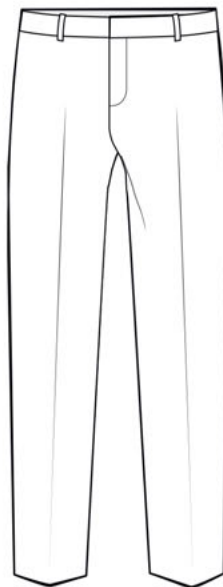
RELAXED

- Relaxed fit
- Suitable for a fuller figure
- Loose, straight shape



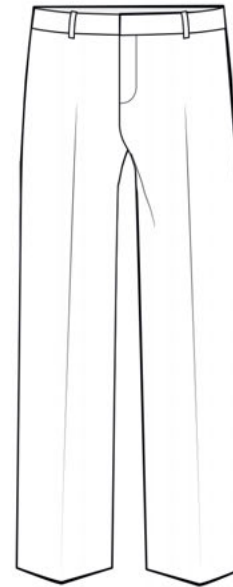
FLAT FRONT

- Sits just below the waist
- Straight through the leg
- Straight leg opening



SLIM PANT

- Sits 3cm below the waist
- Tapered through the leg
- Narrow leg opening



SECRET WAIST

- Sits 3cm below the waist
- Wide through the leg
- Wide leg opening
- Hidden elastic waist

MEN'S SIZING

NNT have created a simple-to-use size chart to help you order the right size. To get an accurate body measurement, use a tape measure, keeping the tape taut but not stretched, and follow the instructions below. Ask a friend to help if necessary.

For consistency, ensure all measurements are taken from the same side of the body.



NECK

Remember, make allowance for comfort. Ask a friend to measure around your neck at collar level. This measurement is your shirt size.



CHEST

Measure around fullest part of the chest, keeping the tape level and straight. Keep one finger between tape and body.



WAIST

Measure around waist, keeping one finger between tape and body. Over your shirt (not trousers) at the position you would normally wear your trousers.

Men's Neck Measurements (Shirts)

AU	CHEST (cm)	WAIST	
		(cm)	(in)
2XS	82	67	26
XS	87	72	28
S	92	77	30
M	97	82	32
L	102	87	34
XL	110	95	36
			38
2XL	118	103	40
			42
3XL	126	111	44
			46
4XL	134	119	46
			48
5XL	142	127	50
			52
6XL	150	135	54

NECK (cm)
36
37
38
39
40
41
42
43
44
45
46
47
48
49
50
51
52
53
54